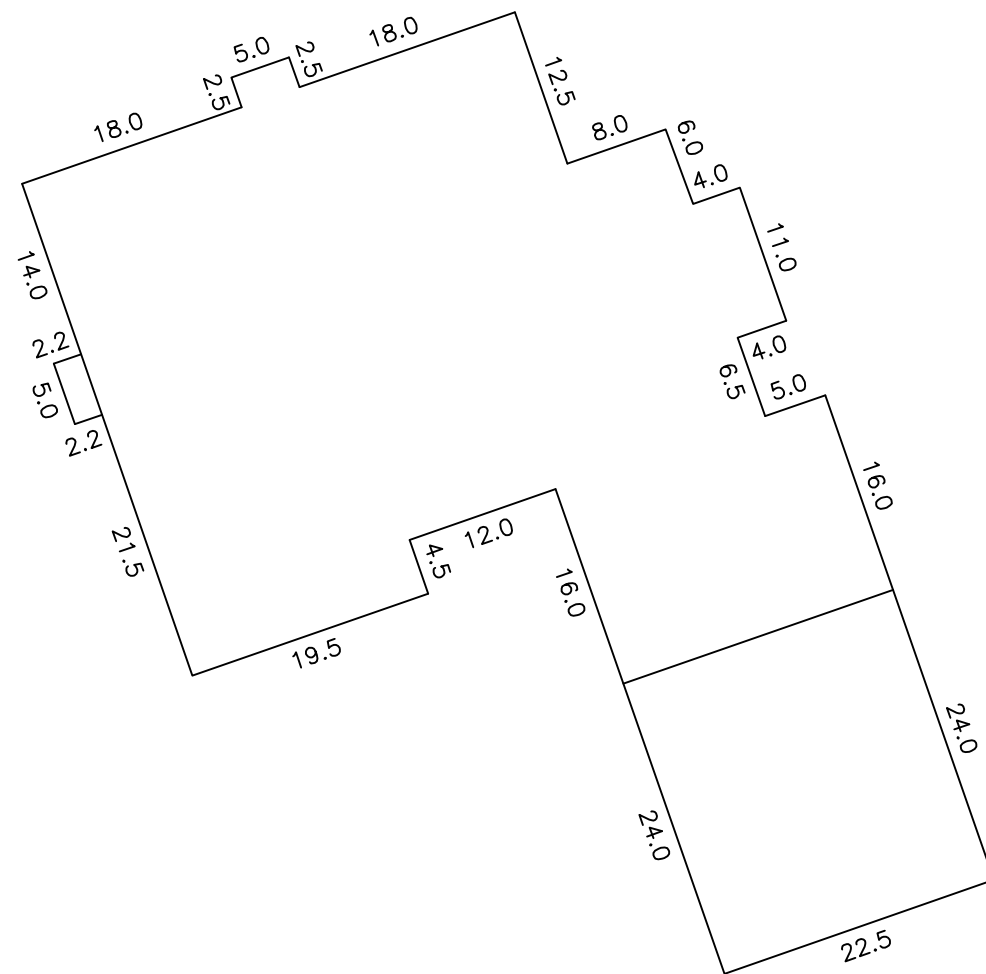


SUNSET BAY CONDOMINIUM

ALL OF LOT 1 OF CERTIFIED SURVEY MAP #5464, VOLUME 31, PAGES 152-153, DOCUMENT #490342 LOCATED IN GOVERNMENT LOTS 2 & 3 OF SECTION 35, TOWNSHIP 39 NORTH, RANGE 16 WEST, TOWN OF MEENON, BURNETT COUNTY, WISCONSIN.

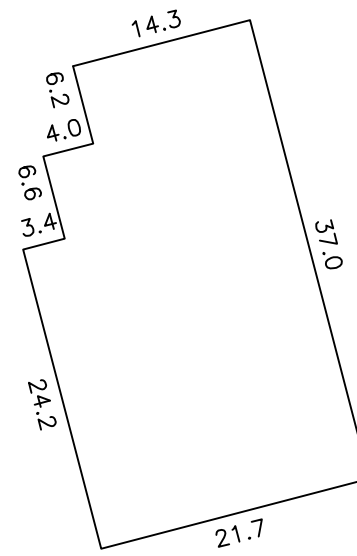
UNIT 1

2,718 S.F.



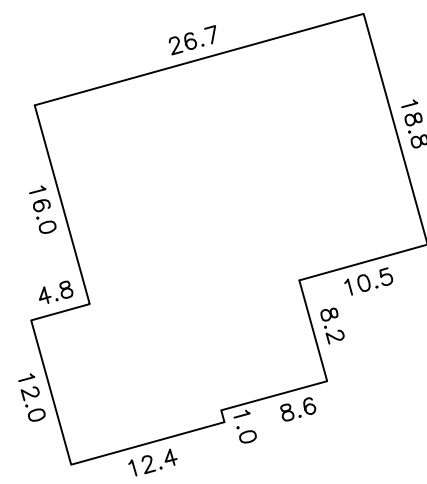
UNIT 2

734 S.F.



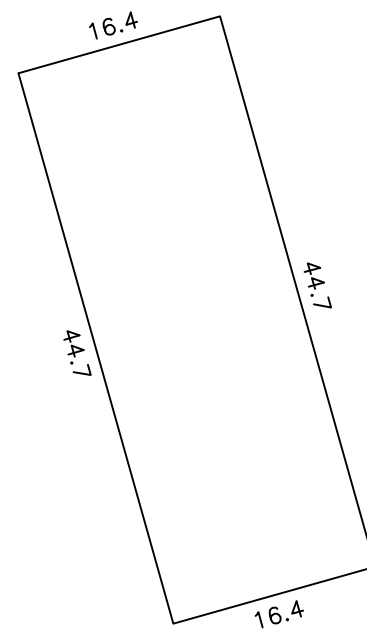
UNIT 3

695 S.F.



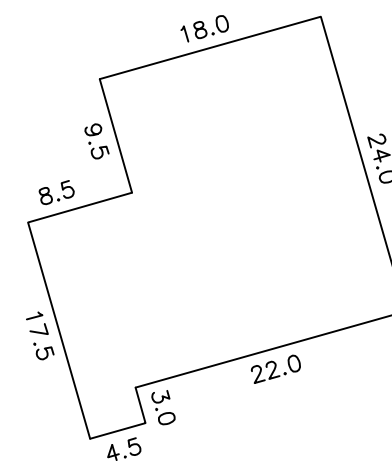
UNIT 4

732 S.F.



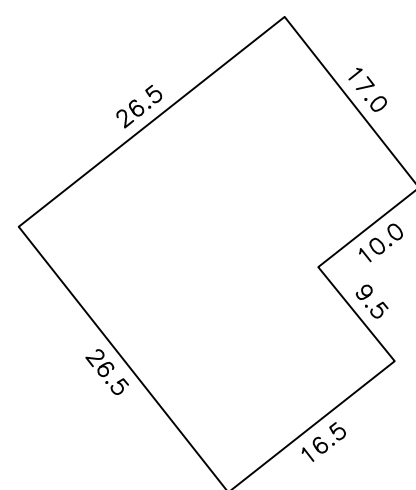
UNIT 5

568 S.F.



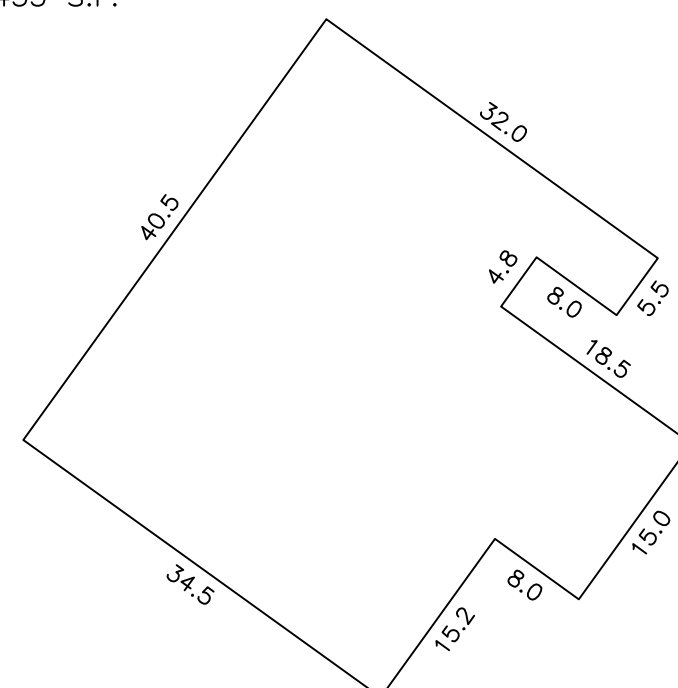
UNIT 6

605 S.F.



UNIT 7

1,453 S.F.



SURVEYOR'S NOTE:
UNIT DIMENSIONS AS SHOWN ON THIS PAGE HAVE BEEN ROUNDED.
UNIT DIMENSIONS SHOWN ON PAGE 1 ARE ACCURATE AS DEFINED.

SCALE 1" = 15'
0 10 15 30 ft.